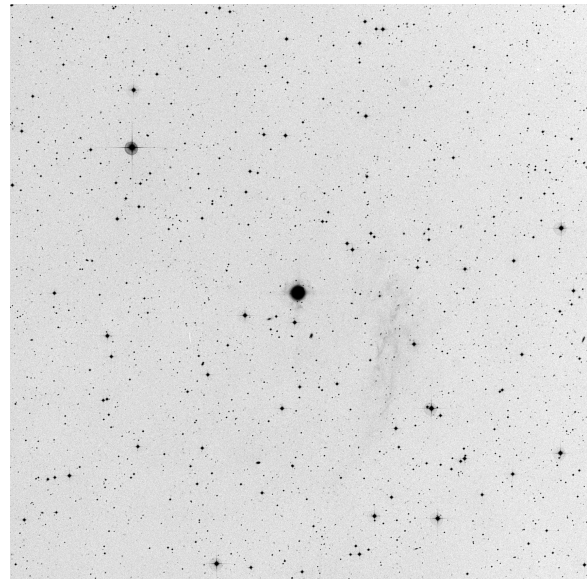
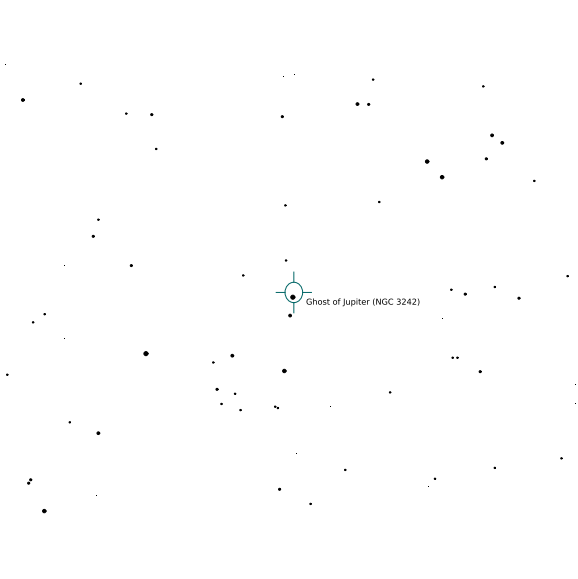
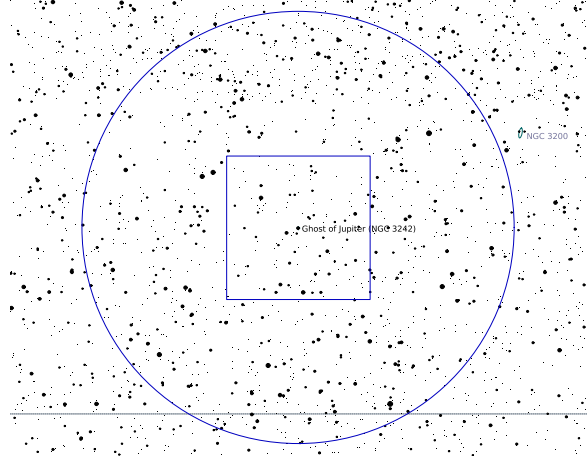
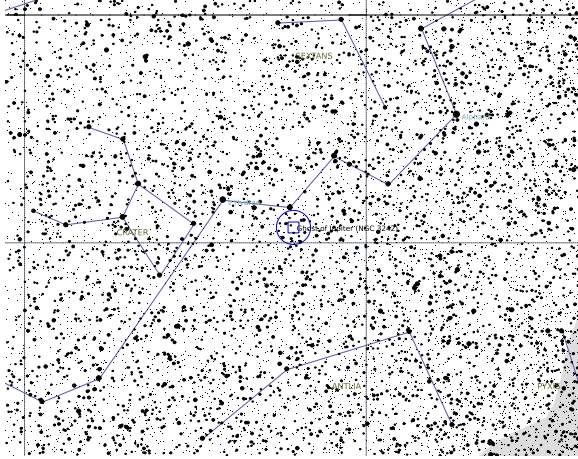


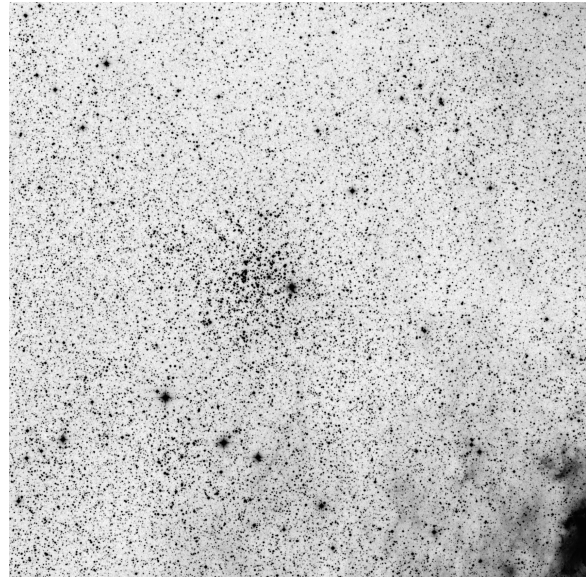
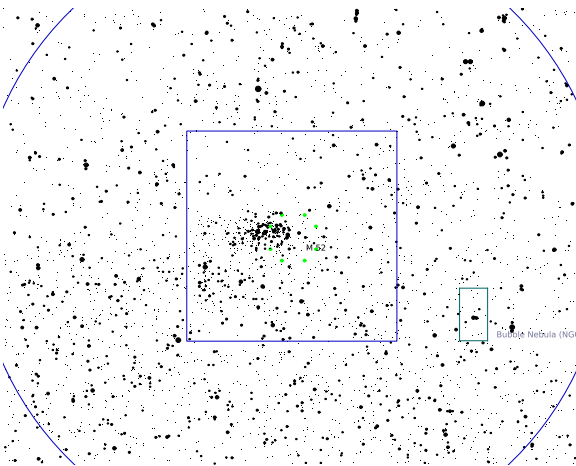
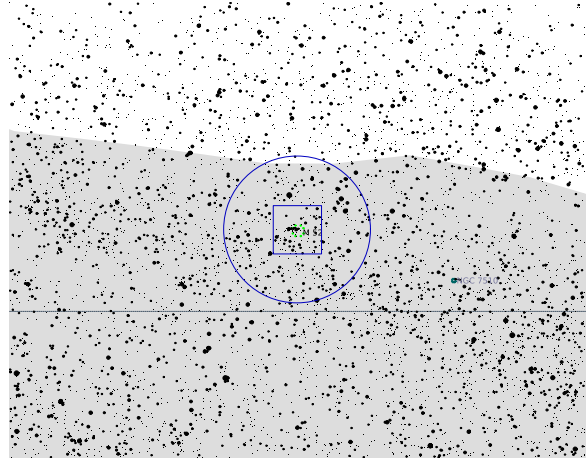
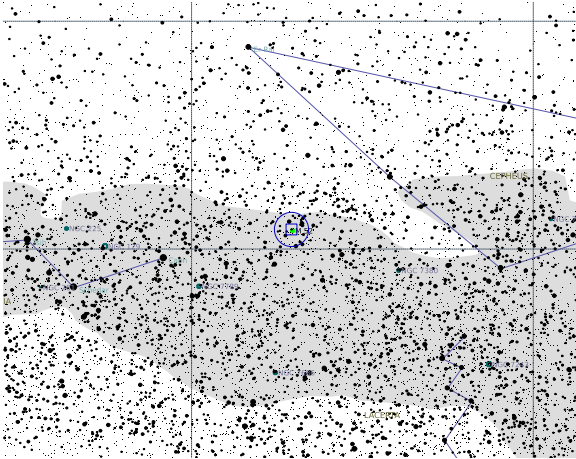
NGC 3242

Right Ascension (current)	10h 25m 25s	Declination (current)	-18d 42m 37s
Major axis (arcminutes)	0.67	Minor axis (arcminutes)	0.58
Magnitude	8.6	—	—



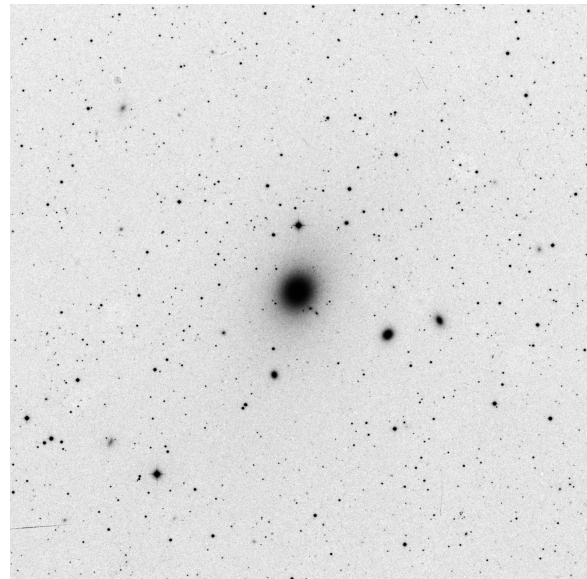
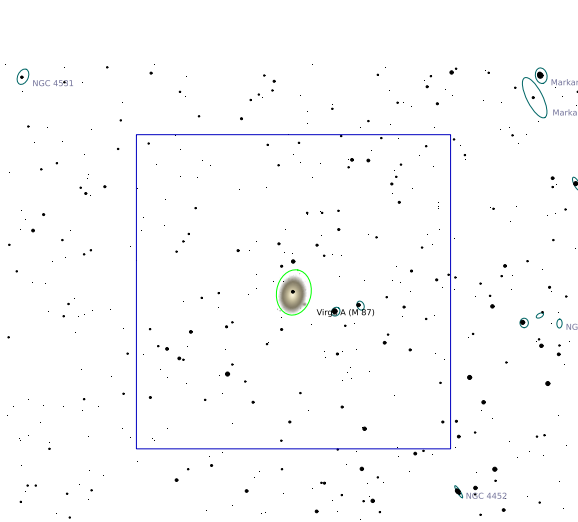
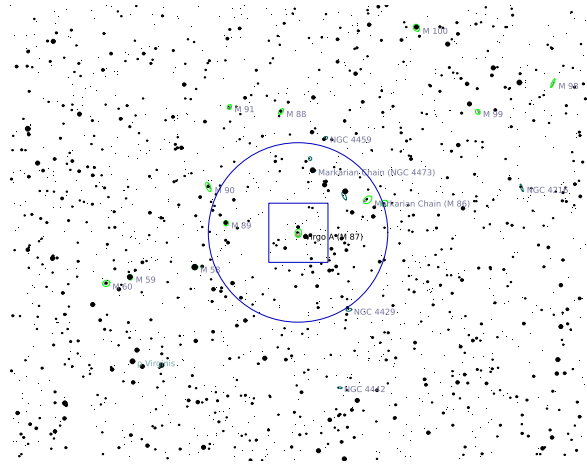
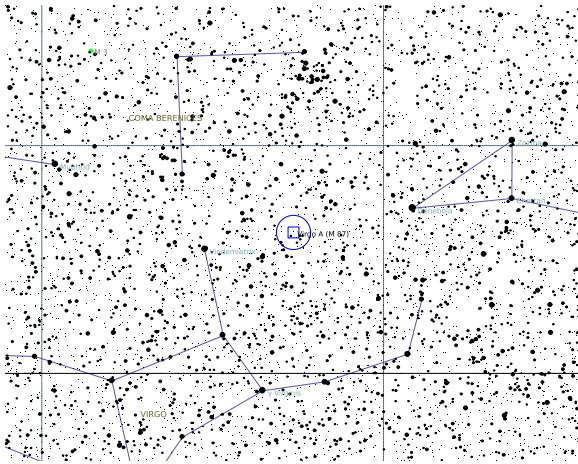
M 52

Right Ascension (current)	23h 24m 47s	Declination (current)	61d 39m 37s
Major axis (arcminutes)	13	Minor axis (arcminutes)	0
Magnitude	6.9	–	–



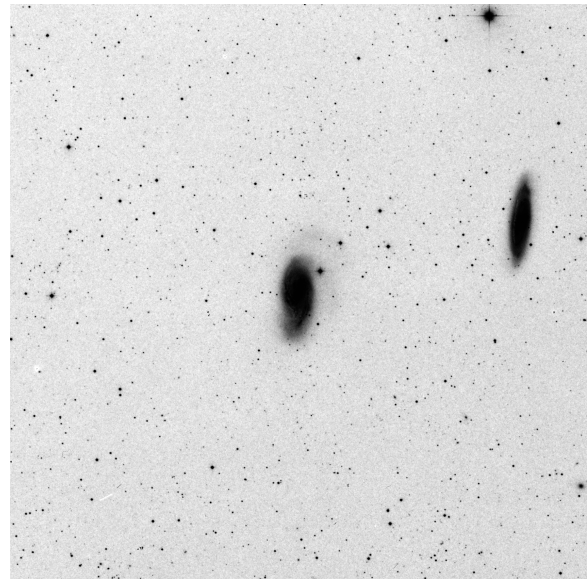
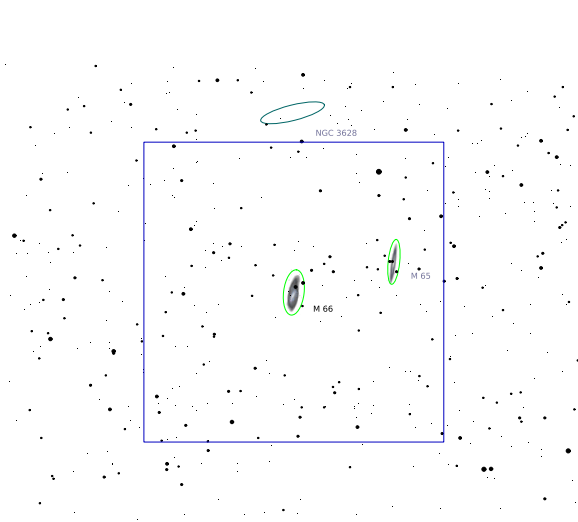
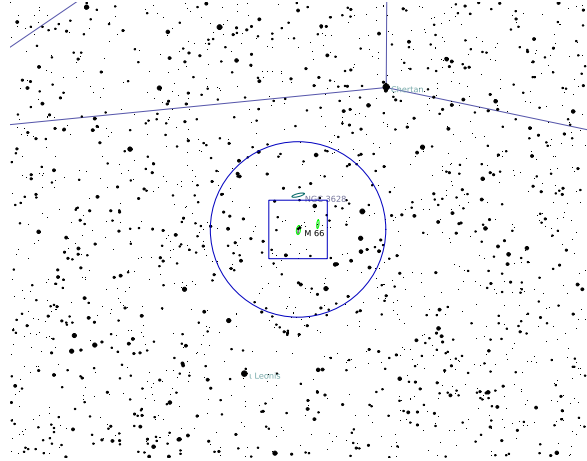
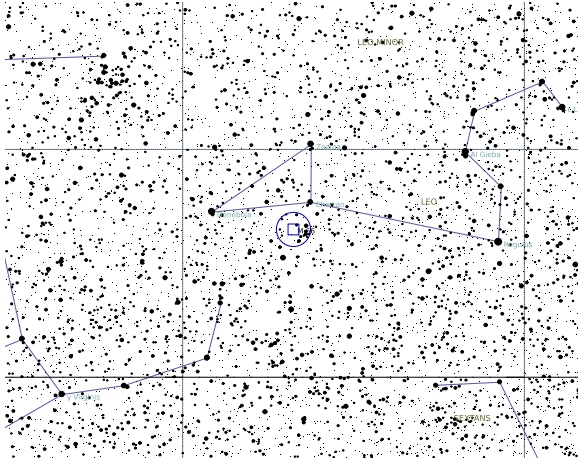
M 87

Right Ascension (current)	12h 31m 29s	Declination (current)	12d 18m 52s
Major axis (arcminutes)	8.7	Minor axis (arcminutes)	6.6
Magnitude	8.6	—	—



M 66

Right Ascension (current)	11h 20m 57s	Declination (current)	12d 54m 57s
Major axis (arcminutes)	9.1	Minor axis (arcminutes)	4.1
Magnitude	8.9	—	—



NGC 4656

Right Ascension (current)	12h 44m 45s	Declination (current)	32d 07m 56s
Major axis (arcminutes)	15.3	Minor axis (arcminutes)	2.4
Magnitude	10	–	–

