

Friday early morning.

Upper field @ TSP 2015

The clearing after the day line.

3:28 AM

1. Draco Dwarf:

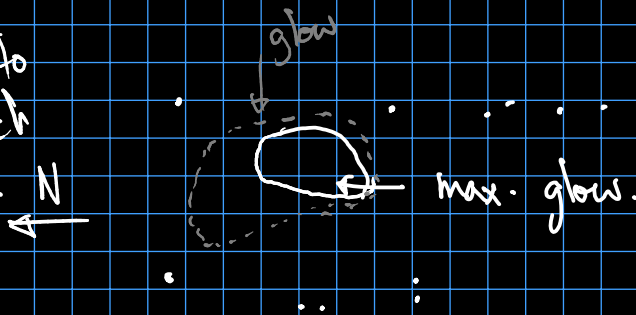
20mm Pentax.

There is a distinct albeit very faint glow
in between the stars.

At first, I confused a nearby group of stars for
the object.

DSS Image was useless, but internet images helped.

Max glow
seems closer to
top stars in sketch
than bot. stars.
as shown.



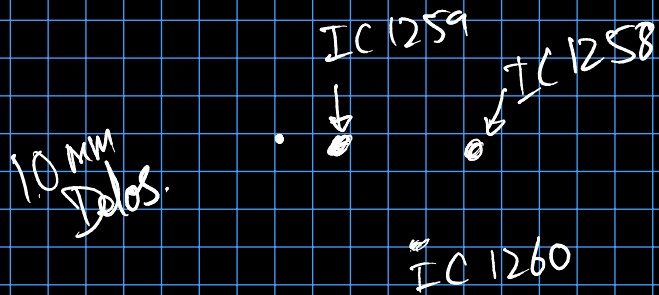
Very distinct!

→ To the gray group.

Definite observation.

2. IC 1258-1259-1260

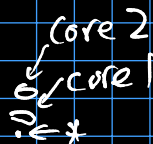
Visited this nearby trio.



1259 & 1258 were held
100% with nearly
direct vision.
IC 1260 ~ 80% averted.

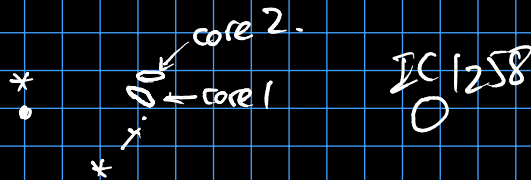
— Jack up power on 1259 —

4.5 mm Delos: Interacting pair distinctly visible.



core 1 is brighter than core 2.

Trying to fix orientation of elongation:



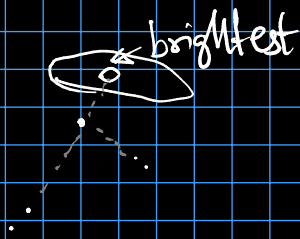
3. Shk 016

Much better than yesterday.

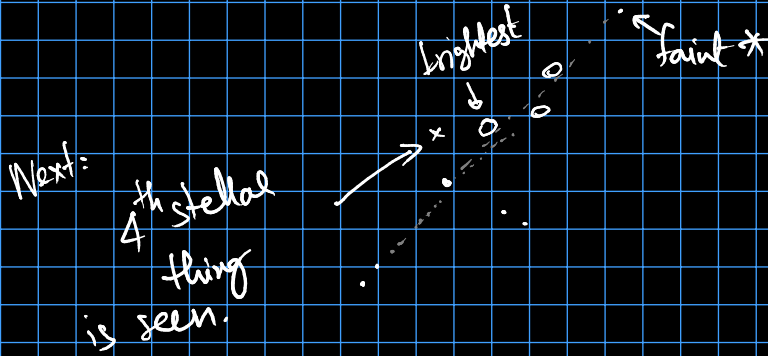
10 mm Delos

← Mottled glow passes the bright star.

With careful observation, brightest glow is seen:



Jimi's trick reveals 3 mottlings:



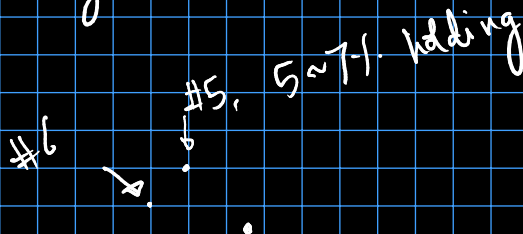
This was a blind observation w/o DSS!
PERFECT AGREEMENT!

7mm Nagler:

5th member sensed as a faint stellar object:

#5 eF.

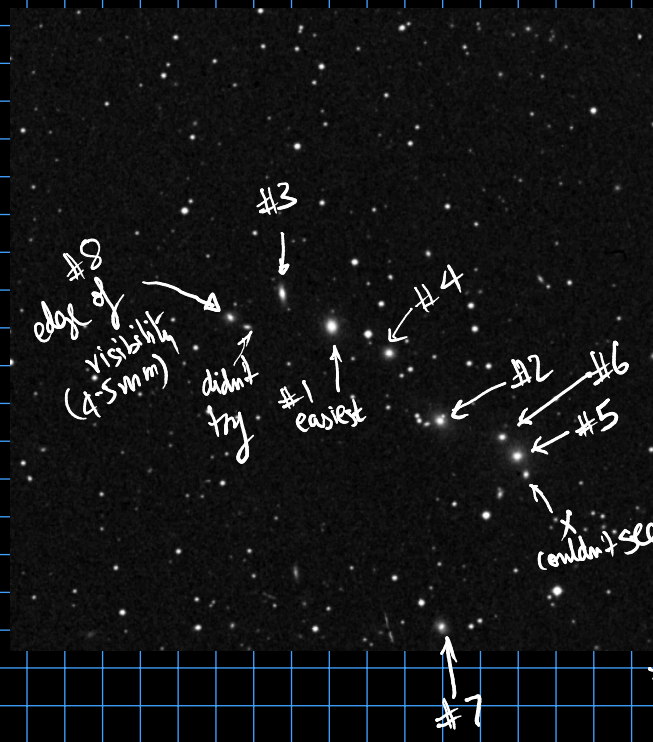
45mm Delos: #5 popped into view multiple times.
 Seeing limited obsⁿ.



#6 was "felt" on 2~3 occasions.

#5 was far more distinct. #6 should not count as a true obsⁿ while #5 can!

4. Shk 166



10mm Delos

#1: easiest, was used to locate the cluster
Region appeared heavily mottled

#2 ~ #3 were seen after using DSS

Upgraded to 7mm at some point.

#3 was noted next followed by #4.

#5 was seen first and #6 was slowly seen, and

clearly resolved later at 4.5mm.

Tried to see the third along with #5 & #6 but could not.

#7 was made difficult by the double star's glow. Was seen at 7mm and 4.5mm.

Then, at 4.5mm, glimpses of #8 were had. This was at the very edge of visibility!!

(Time is 5 AM, i.e. ~16 min to moonrise)

Heavy wind & poor seeing made obsn. harder.

5. NGC 6621

Best view: 4.5mm Delos.

The two nuclei were easy to see.
The interaction arm and the opposing arm were held quite

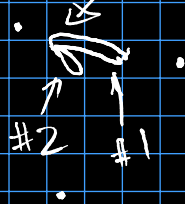
well at 4.5mm.

Looked really hard for the star forming region between the nuclei, but could not see it apart from maybe one 'flash' or two. Beautiful object!

6. Arp 278 (Mild lunar influence)

7mm Nagler.

the region of interaction initially looked bushy:



kinda like a comet

but could later resolve the orientations of the galaxies.

#1 is easier than #2.

Substantial lunar influence. Bright object too!

7. Pacman Nebula @ 20mm + OIII.

8. Veil Neb. @ 20mm + OIII !!!!!

Words fail me. I haven't seen anything this bright & beautiful for months, but every time, this showpiece never ceases to impress!

Is it looking much better today???

So much detail!

After the Veil, nothing can top it.

9. M17

10. M8

11. M22

12. M57

Moon bright enough to read a book. Stop.